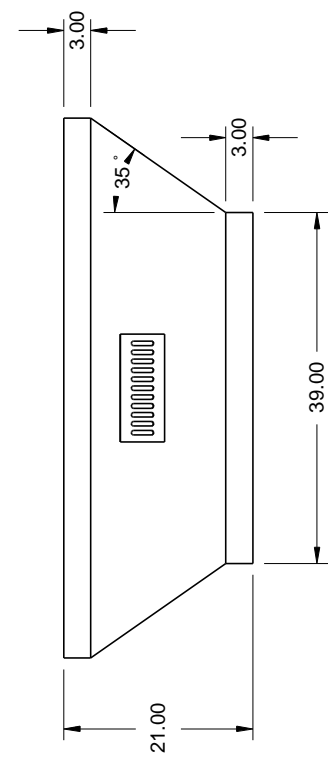
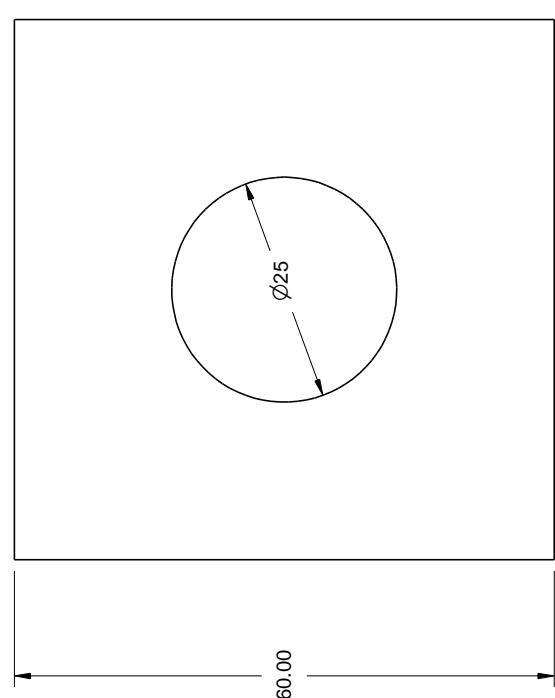
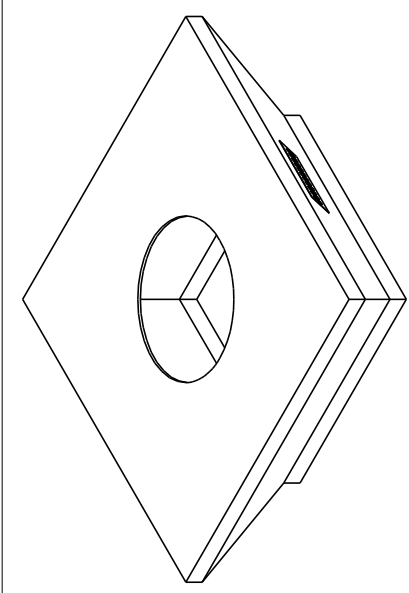



REVISIONS				
ZONE	REV	DESCRIPTION	DATE	APPROVED



Material: 22G Galvanized Steel Structure 1/2" Hardboard shell	Additional info: Weighs 150 lbs. Optional 19" cut out for 19" Pan 304 Stainless steel vents Open bottom	Do not pre-cut surface material. Only cut surface material after enclosure is on-site. HPC is not responsible for surface material that cracks or fails due to heat.	DRAWN Mike Chaffins	DATE 2/5/2015	<h1>FPE60SQUARETAP</h1>	
		CHECKED QA	MFG APPROVED	SIZE A		Hearth Products Controls Co 
		FSCM NO.	DWG NO.	REV	SCALE	SHEET