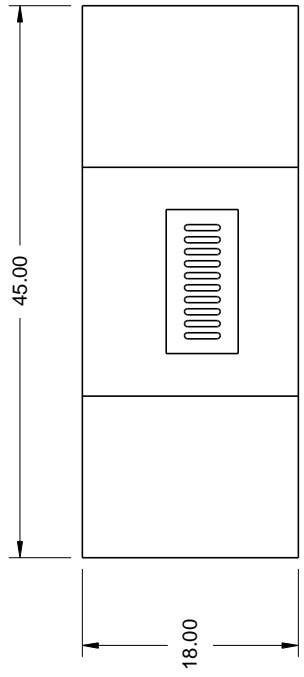
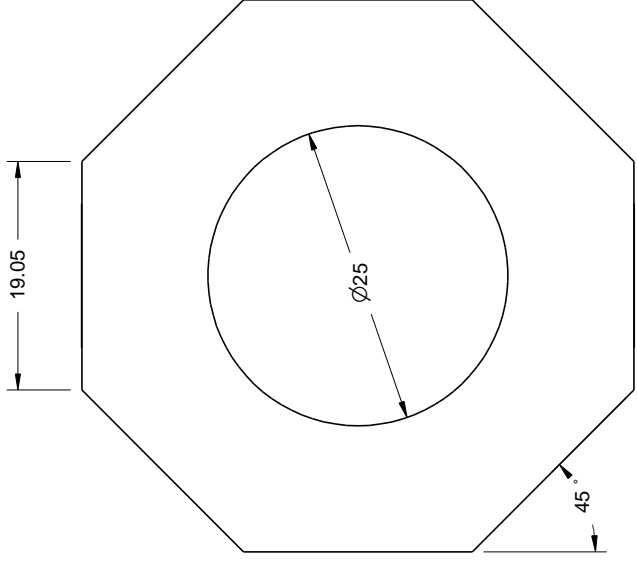
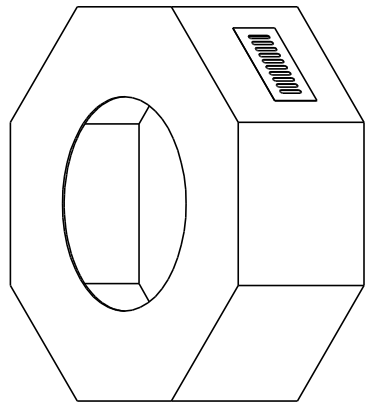



REVISIONS				
ZONE	REV	DESCRIPTION	DATE	APPROVED



Material:
 22G Galvanized Steel Structure
 1/2" Hardiboard shell

Additional info:
 Weighs 150 lbs.
 Optional 19" cut out for 19" Pan
 304 Stainless steel vents
 Open bottom

Do not pre-cut surface material. Only cut surface material after enclosure is on-site. HPC is not responsible for surface material that cracks or fails due to heat.

DRAWN Mike Chaffins	DATE 2/5/2015	 Hearth Products Controls Co DWG NO.	
CHECKED			
QA		SIZE A	FSCM NO.
MFG		SCALE	REV
APPROVED			SHEET