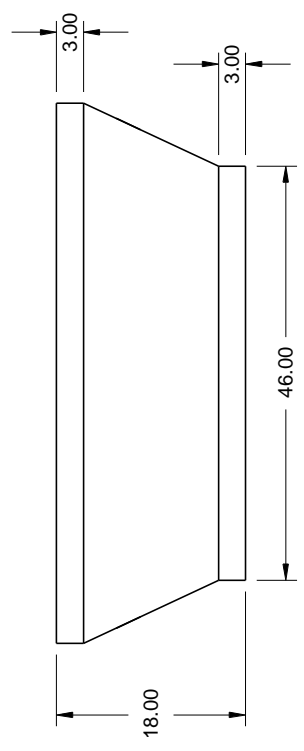
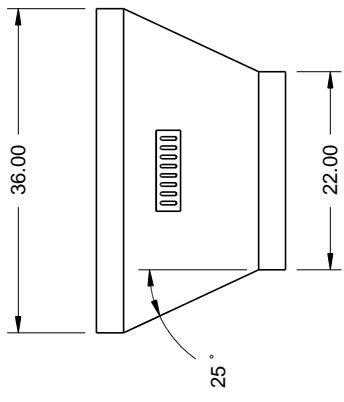
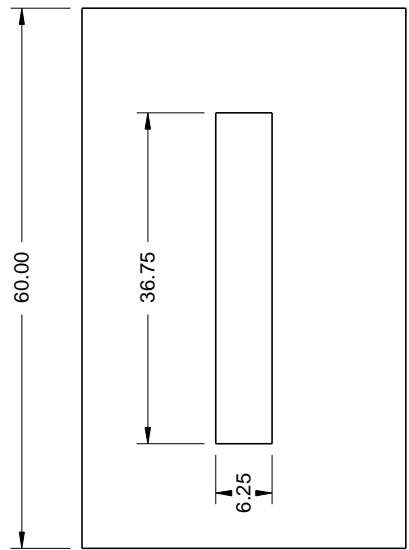
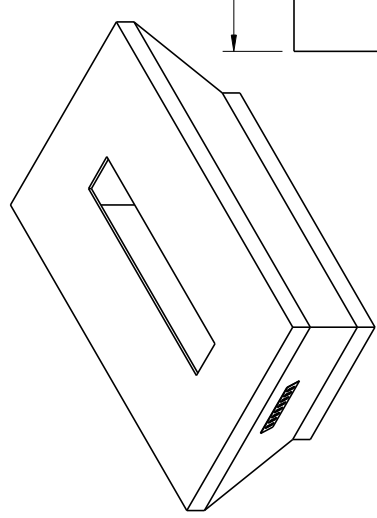



REVISIONS				
ZONE	REV	DESCRIPTION	DATE	APPROVED



Material:
 22G Galvanized Steel Structure
 1/2" Hardiboard shell

Additional info:
 Weighs 150 lbs.
 Optional 19" cut out for 19" Pan
 304 Stainless steel vents
 Open bottom

<p>FPE60X36TAP</p>  <p>Hearth Products Controls Co</p>		DATE	2/5/2015
		DRAWN	Mike Chaffins
<p>Do not pre-cut surface material. Only cut surface material after enclosure is on-site. HPC is not responsible for surface material that cracks or fails due to heat.</p>		CHECKED	
		QA	
<p>SIZE A</p> <p>FSCM NO. DWG NO.</p>		APPROVED	
		MFG	
<p>SCALE</p>		<p>SHEET</p>	