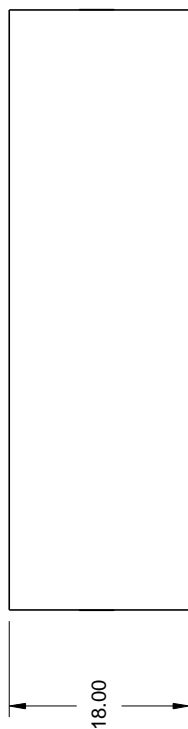
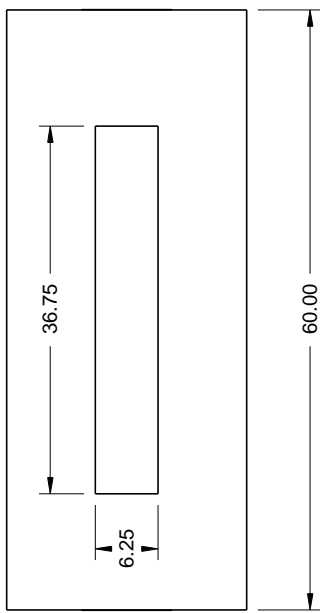
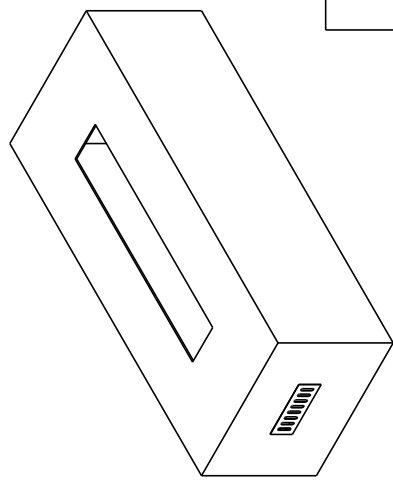



REVISIONS				
ZONE	REV	DESCRIPTION	DATE	APPROVED



**Material:**  
 22G Galvanized Steel Structure  
 1/2" Hardiboard shell

**Additional info:**  
 Weighs 150 lbs.  
 304 Stainless steel vents  
 Open bottom

Do not pre-cut surface material. Only cut surface material after enclosure is on-site. HPC is not responsible for surface material that cracks or fails due to heat.	DRAWN	DATE	<h1>FPE60X24-TRGH/36</h1>	
	Mike Chaffins	2/5/2015		
MFG APPROVED	CHECKED	QA		<b>Hearth Products Controls Co</b> DWG NO.
			SIZE <b>A</b>	FSCM NO.
				REV
				SCALE
				SHEET